

# Cyclic and dimeric gluten peptide analogues inhibiting DQ2-mediated antigen presentation in celiac disease

Jiang Xia,<sup>a,†</sup> Elin Bergseng,<sup>d,†</sup> Burkhard Fleckenstein,<sup>d</sup> Matthew Siegel,<sup>b</sup>  
Chu-Young Kim,<sup>e</sup> Chaitan Khosla<sup>a,b,c,\*</sup> and Ludvig M. Sollid<sup>d,\*</sup>

<sup>a</sup>Department of Chemistry, Stanford University, Stanford, CA 94305-5025, USA

<sup>b</sup>Department of Chemical Engineering, Stanford University, Stanford, USA

<sup>c</sup>Department of Biochemistry, Stanford University, Stanford, USA

<sup>d</sup>Institute of Immunology, University of Oslo, Rikshospitalet–Radiumhospitalet Medical Center, N-0027 Oslo, Norway

<sup>e</sup>Department of Biological Sciences, National University of Singapore, Singapore

Received 7 May 2007; revised 6 July 2007; accepted 9 July 2007

Available online 25 July 2007

**Abstract**—Celiac disease is an immune mediated enteropathy elicited by gluten ingestion. The disorder has a strong association with HLA-DQ2. This HLA molecule is involved in the disease pathogenesis by presenting gluten peptides to T cells. Blocking the peptide-binding site of DQ2 may be a way to treat celiac disease. In this study, two types of peptide analogues, modeled after natural gluten antigens, were studied as DQ2 blockers. (a) *Cyclic peptides*. Cyclic peptides containing the DQ2- $\alpha$ I gliadin epitope LQPFQPELPY were synthesized with flanking cysteine residues introduced and subsequently crosslinked via a disulfide bond. Alternatively, cyclic peptides were prepared with stable polyethylene glycol bridges across internal lysine residues of modified antigenic peptides such as KQPFQPELPY and LQLQPFQPEKPYQPEKPY. The effect of cyclization as well as the length of the spacer in the cyclic peptides on DQ2 binding and T cell recognition was analyzed. Inhibition of peptide-DQ2 recognition by the T cell receptor was observed in T cell proliferation assays. (b) *Dimeric peptides*. Previously we developed a new type of peptide blocker with much enhanced affinity for DQ2 by dimerizing LQLQPFQPEKPYQPELPY through the lysine side chains. Herein, the effect of linker length on both DQ2 binding and T cell inhibition was investigated. One dimeric peptide analogue with an intermediate linker length was found to be especially effective at inhibiting DQ2 mediated antigen presentation. The implications of these findings for the treatment of celiac disease are discussed.

© 2007 Elsevier Ltd. All rights reserved.

## 1. Introduction

Class II major histocompatibility complex (MHC) molecules are receptors expressed as  $\alpha\beta$  heterodimers on the surface of antigen presenting cells.<sup>1</sup> They bind exogenous peptides (typically after sequential endocytosis, lysosomal assembly, and exocytosis) and present them to CD4<sup>+</sup> T helper cells, a critical process in the mammalian adaptive immune response.<sup>1</sup> Genetic susceptibility to autoimmune disease in human is often linked to variants of MHC class II molecules.<sup>2–4</sup> In celiac disease

more than 90% of the patients possess the HLA-DQ2 (DQA1 \* 05/DQB1 \* 02) molecule, while DQ8 (DQA1 \* 03/DQB1 \* 0302) is expressed by most of the remaining patients.<sup>5</sup> DQ2 mediated presentation of gluten peptides (after regiospecific deamidation by extracellular transglutaminase 2) to CD4<sup>+</sup> T cells is one of the key events in the pathogenesis of celiac disease.<sup>6</sup> The current treatment of celiac disease is lifelong exclusion of gluten from the diet. To be on gluten free diet is a major challenge for the patient and there is therefore a need for therapeutic alternatives.

Interference with peptide antigen presentation has been explored as a treatment for autoimmune diseases such as type I diabetes, multiple sclerosis, experimental autoimmune encephalomyelitis, and rheumatoid arthritis. In principle, these studies fall into two categories based on the mode of action of the MHC binding ligands;

**Keywords:** Celiac disease; HLA-DQ2; Gluten; Gliadin; Cyclic peptide; Dimeric peptide; Antigen presentation; Inhibition.

\* Corresponding authors. Tel.: +47 23073500; fax: +47 23073510 (L.M.S.); Tel.: +650 723 6538; fax: +650 725 7294 (C.K.); e-mail addresses: [khosla@stanford.edu](mailto:khosla@stanford.edu); [l.m.sollid@medisin.uio.no](mailto:l.m.sollid@medisin.uio.no)

<sup>†</sup> These authors contributed equally to this work.

(a) altered peptide ligands<sup>7,8</sup> or (b) MHC blockers.<sup>9–11</sup> An altered peptide ligand is specifically recognized by a T cell receptor (TCR), but it elicits a signal which is qualitatively different from that of the normal agonist peptide.<sup>7</sup> An altered peptide ligand can induce anergy in T cells, and altered peptide ligands of this kind are termed MHC antagonists.<sup>12</sup> The effect of an altered peptide ligand is specific to a given T cell receptor, and two different TCRs recognizing the same peptide-MHC complex may respond differently to the same altered peptide ligand.<sup>7</sup> In contrast, peptide blockers act by out-competing the MHC binding of the agonist peptide. Ideally, these compounds should not serve as TCR ligands themselves. This can be achieved by steric principles, either via a bulky ligand which precludes docking of any TCR onto the ligand-MHC complex or via a small molecule inhibitor that eliminates the possibility of ligand-TCR interactions. The altered peptide ligand approach is less attractive for celiac disease therapy due to the multiplicity of gluten-derived epitopes as well as the polyclonal nature of T cells recognizing the same epitope (unpublished observations). We have previously reported that peptide blockers can be modeled after gluten epitopes by attachment of bulky groups (e.g., large functionalized alkyl groups) or by dimerization.<sup>13</sup> Cyclization presents another way to prevent T cell recognition through steric hindrance.<sup>14–18</sup> In this report, two types of hindered peptides—cyclic peptides and dimeric peptides—are systematically studied as DQ2 binding ligands and potential inhibitors of DQ2 mediated antigen presentation.

## 2. Results

### 2.1. Cyclic peptides containing disulfide linkage

Three Cys-containing variants of the peptide LQPFQPELPY were synthesized, CGGLQPFQPELPYGGCA (peptide 1), CGGGGLQPFQPELPYGGCA (peptide 2), and CGGGGGGLQPFQPELPYGGCA (peptide 3) (the DQ2- $\alpha$ I gliadin peptide is underlined, and the Gly linkers are shown in italics) (Fig. 1). In each case the core peptide is flanked by Cys residues with variable Gly<sub>2</sub>, Gly<sub>4</sub>, or Gly<sub>6</sub> spacers at the *N*-terminus making in total 4, 6, or 8 Gly residues between two Cys residues so as to systematically vary the torsional flexibility of the core peptide when subjected to intramolecular disulfide crosslinking. Following synthesis, the Cys residues of each peptide were allowed to crosslink in pH 7 phosphate buffer at 50 °C with periodic vortexing in the absence of any reducing agent. Quantitative conversion of the linear peptides to cyclic peptides was verified by reverse phase HPLC, and the identity of the cyclic product was confirmed by MALDI-TOF MS, which revealed a loss of 2 U in *m/z* relative to the starting material. The DQ2 affinities of these peptides were assessed by measuring the IC<sub>50</sub> values, with lower values corresponding to higher binding affinity to DQ2 (Fig. 3). The three disulfide bridged cyclic peptides showed similar binding affinity to DQ2 as the reference acyclic peptide LQPFQPELPY, demonstrating that the peptides still bind to DQ2 after cyclization.

### 2.2. Internally bridged cyclic peptide analogues

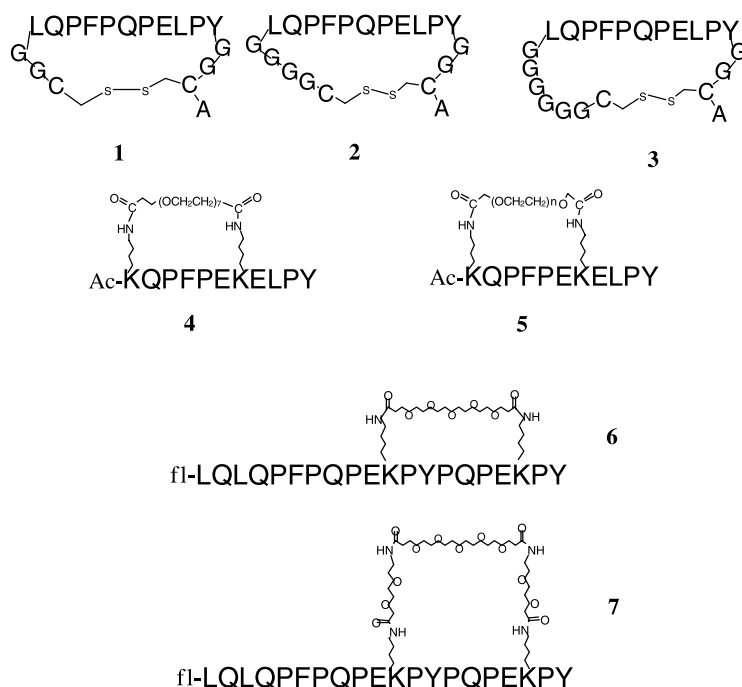
Peptides 4 and 5 were designed based on a derivate of the DQ2- $\alpha$ I gliadin epitope, LQPFQPELPY (nonamer core sequence underlined). The Gln residue in position 4 of the core sequence was substituted with Glu to increase the binding affinity (4-fold increase), and Lys residues were introduced in position-2 and -5, producing the sequence KQPFPEKELPY. Based on the X-ray crystal structure the introduction of Lys residues should minimally affect binding to DQ2.<sup>19</sup> The side chains of these two Lys residues were crosslinked intramolecularly through bisfunctional PEG linkers (Fig. 1). In addition, peptides 6 and 7 were also prepared; these peptides were based on a higher affinity 20-mer gluten peptide LQLQPFQPELPYPQPELPY, which was deduced from the immunodominant 33-mer peptide.<sup>13</sup> Two Leu residues were replaced by Lys residues in this peptide (Fig. 1).

Peptides 4 and 5 were binding with similar affinities, which is notable as the linker length of peptide 5 is heterogeneous. The mass spectrometry analysis of peptide 5 revealed presence of some dimeric species which may have biased the DQ2 binding analysis. Cyclic peptides 6 and 7 showed higher affinities to DQ2 than peptides 4 and 5 (Fig. 3).

Peptides 1–7 were tested in a T cell proliferation assay for recognition by a DQ2- $\alpha$ I specific T cell clone TCC 430.1.142 (Fig. 4). Surprisingly, peptide 6 is recognized at high concentrations. This fact is probably due to impurities in the peptide. The disulfide bridged peptides 1–3 were also recognized by the DQ2- $\alpha$ I specific T cell clone. The reason for this is probably that the disulfide bonds are unstable in the milieu of the cell culture. Peptides 4–7 were also tested for their ability to inhibit DQ2-mediated antigen presentation of the DQ2- $\gamma$ II gliadin epitope GHIQPEQPAQL to T cell clones derived from celiac disease patients (DQ2- $\gamma$ II specific) (Fig. 5). As expected, peptides 6 and 7 showed the strongest inhibition among the cyclic peptides. Notably, these two peptides were even better inhibitors than the reference peptide KPLLIIAEDVEGEY (P198), which binds to DQ2 with lower IC<sub>50</sub> values than either of the peptides. The two other cyclic peptides (4 and 5), based on shorter versions of gliadin epitopes, did not show appreciable inhibition (Fig. 5). As a control, the inability of any of these peptides to inhibit DR3 mediated antigen presentation was verified (Fig. 6).

### 2.3. Dimeric peptides with various linker lengths

Peptide dimerization is another strategy that has been shown to inhibit proliferation of gluten sensitive T cell lines in the presence of antigen and DQ2 homozygous antigen presenting cells. For example, peptide 8 (Fig. 2a) is one of the most potent inhibitors identified to date.<sup>13</sup> We therefore systematically studied the effect of chain length between the two monomeric units of 8. Two derivatives of the high affinity gluten peptide LQLQPFQPELPYPQPELPY, with L11K and L11C substitutions, were used as starting materials (Fig. 2b). Previous studies had confirmed that modifications at this



**Figure 1.** Structures of synthetic cyclic peptides. Peptide 5 represents a heterogeneous mixture with  $n \approx 11$ . Ac denotes N terminal acetylation; fl denotes N terminal labeling with 5-(and 6-) carboxyfluorescein.

position do not affect its binding to DQ2.<sup>13</sup> Seven dimeric analogues of **8** (peptides **9–15**) were synthesized using the maleimide–thiol reaction, succinimide–amine reaction or both (Fig. 2c). The resulting dimeric peptides have PEG linkers (peptides **11**, **12**, **13**, **14**, and **15**) or alkyl linkers (peptides **9** and **10**) ranging from 13 to 89 atoms long between the  $\alpha$ -carbon atoms of the bridging residues in the two monomers; this corresponds to extended linker lengths from 14 Å to 98 Å (Table 1). All reactions gave >70% yields, as verified by LC-MS (data not shown).

First, the binding of the dimeric peptides **8–15** was assessed in peptide exchange experiments using recombinant DQ2 and high performance size exclusion chromatography at pH 5.5 and pH 7.3 with a DQ2:peptide ratio of 25:1. The percentage of DQ2 bound fluorescent peptide is a measure of its DQ2 affinity. Dimeric peptides with varying linker lengths have comparably high affinity for DQ2, which achieved equilibrium after only 5 h (Table 1). All dimeric peptides were able to form 2:1 complexes with two DQ2 molecules bound to one peptide at pH 5.5 (Table 2). These 2:1 complexes are observed only after 14 h, suggesting that the binding of the second DQ2 molecule to a 1:1 DQ2-peptide complex is slow. At pH 7.3, no 2:1 complexes could be observed.

Second, in order to select effective blockers, the dimeric peptides **8–15** were screened to measure their potency to stimulate a gluten responsive T cell line P28 TCL2 which is derived from a celiac patient. Upon incubation of the dimeric peptides in Figure 2 with DQ2 expressing antigen presenting B cells overnight at 37 °C at 10  $\mu$ M or 50  $\mu$ M concentrations, the extent of T cell stimulation was measured (Fig. 7a). All the dimeric peptides containing cysteine–maleimide bonds stimulated T cell pro-

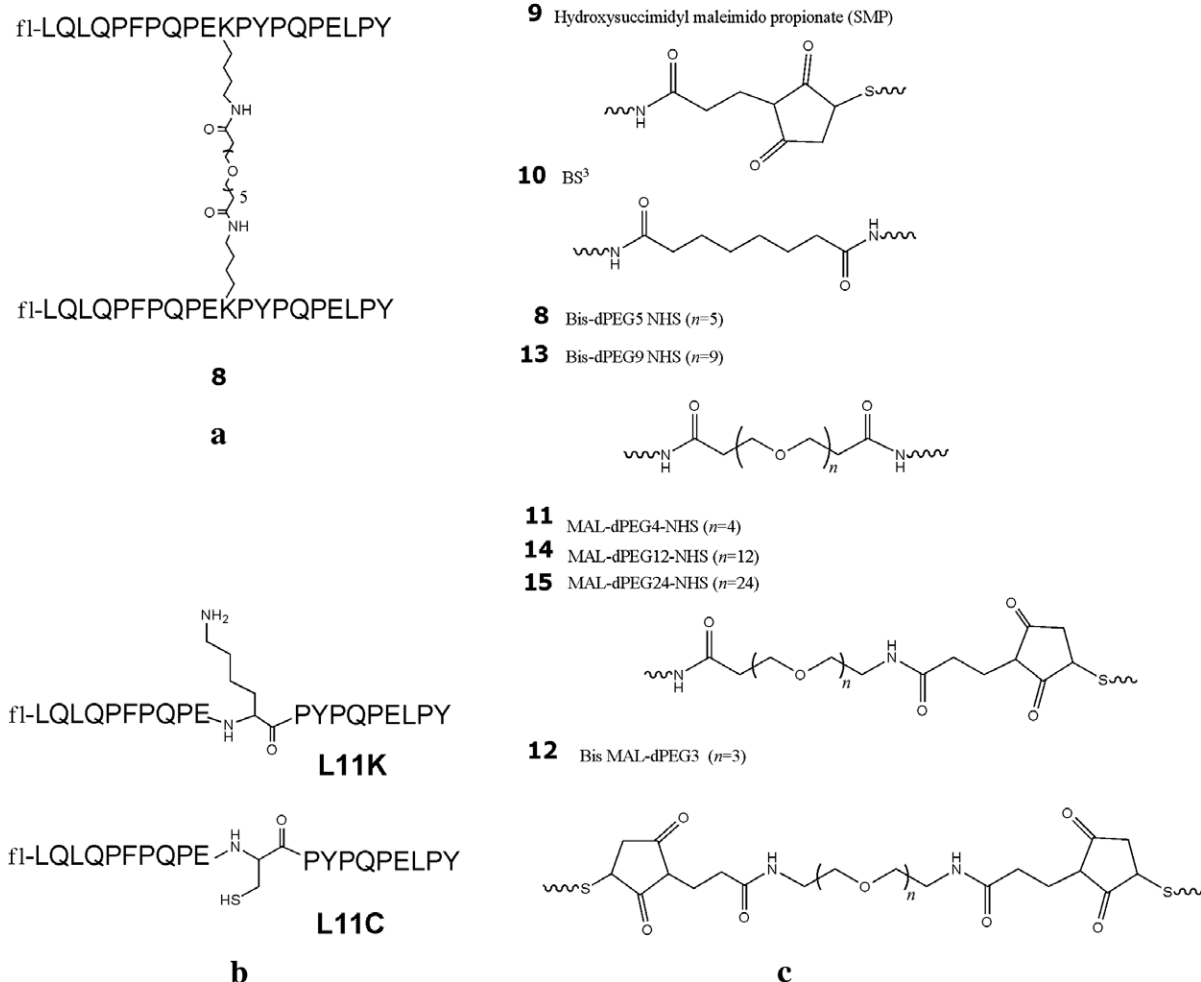
liferation (peptides **9**, **11**, **12**, **14**, and **15**), suggesting that the thiol–maleimide bond was not stable in this biological milieu. In contrast, peptides with amide crosslinkers (e.g., peptides **8**, **10**, and **13**) showed lower T cell stimulation, suggesting their linkers were more metabolically stable than the cysteine–maleimide linkers, although the longest peptide **13** showed increased antigenicity at the highest concentration, 50  $\mu$ M. Whether this was due to too much flexibility or metabolic instability or possible small amounts of monomeric peptide impurities (<5%) was not investigated.

Next, based on the above results, the T cell inhibitory effects of peptides **10** and **13** were tested and compared with peptide **8** which previously had demonstrated effect in this type of assay.<sup>13</sup> All three peptides showed dose dependent inhibition of antigen presentation using fixed antigen presenting cells (Fig. 7b).

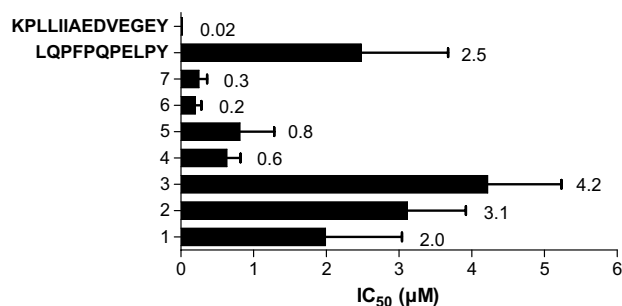
Last, to test whether peptide **8** was able to inhibit antigen presentation in non-fixed antigen presenting cells, 25  $\mu$ M peptide **8** was incubated with  $\gamma$ -irradiated DQ2 expressing B cells for 2 h. The antigenic peptide was then added, and cells were incubated for another 10 h. As shown in Figure 8, T cell proliferation was inhibited by the addition of peptide **8**. Thus, DQ2 blockers of this type appear to be able to compete with antigenic peptides for surface HLA-DQ2 occupancy in both fixed and non-fixed antigen presenting cells.

### 3. Discussion

Our studies have explored the potential of using cyclic and dimeric peptides as peptide blockers to prevent



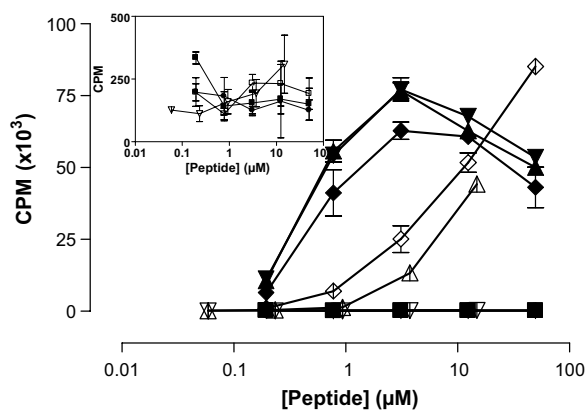
**Figure 2.** Dimeric peptides. (a) The structure of the reference dimeric peptide **8**. (b) The structures of the modified monomers L11K and L11C. (c) The structures of the linkers in dimeric peptides **8–15**.



**Figure 3.** IC<sub>50</sub> values for binding of cyclic peptides to DQ2. The results are shown as mean and SD of three experiments.

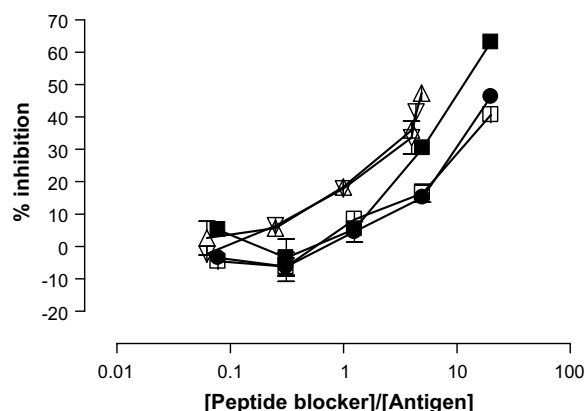
DQ2 mediated antigen recognition by T cell receptors that are uniquely found in small intestinal mucosa of celiac disease patients. The lengths of spacers in cyclic peptides and linkers in dimeric peptides were varied to investigate their effects on DQ2 binding affinity and T cell recognition.

Interference of MHC class II restricted antigen presentation by altered peptide ligands, or peptide or peptidomimetic analogues has been explored as possible therapeutic options in autoimmune diseases.<sup>8–11,13–16,18,20–25</sup> This

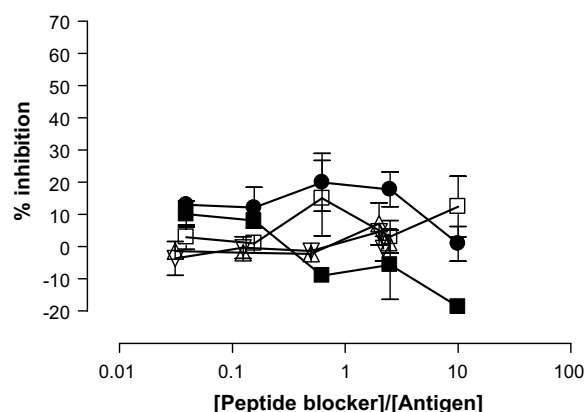


**Figure 4.** Recognition of cyclic peptides by T cells. The T cell clone 430.1.142 (specific for the DQ2- $\alpha$ I gliadin epitope) was stimulated by cyclic peptides harboring the DQ2- $\alpha$ I sequence. (■) P198, (▲) peptide 1, (▼) peptide 2, (◆) peptide 3, (●) peptide 4, (□) peptide 5, (△) peptide 6, (▽) peptide 7, (◇) LQFPFQPELPY. The inset shows CPM in lower ranges for non-stimulatory cyclic peptides. P198: KPLLI AEDVEGEY; *Mycobacterium bovis* 65 kDa heat shock protein 243–255Y. Mean and SD is shown.

principle has not been successful mainly due to poor bioavailability and pharmacokinetics of peptidic com-



**Figure 5.** Inhibition of T cell proliferation by the blocking compounds **4**, **5**, **6**, and **7**. The T cell clone 437.1.3.17 (specific for the DQ2- $\gamma$ II gliadin epitope) was stimulated with 2.5  $\mu$ M GIIQPEQPAQL (P1298, DQ2- $\gamma$ II gliadin epitope) in the presence of increasing concentration of peptide blockers (■) P198, (●) peptide 4, (□) peptide 5, (△) peptide 6, (▽) peptide 7. P198: KPLLIIAEDVEGEY; *Mycobacterium bovis* 65 kDa heat shock protein 243–255Y. Mean and range is shown.



**Figure 6.** Inhibition of T cell proliferation by the blocking compounds **4**, **5**, **6**, and **7**. The T cell clone RN.46 (DR3-restricted) was stimulated with 5  $\mu$ M KTIAYDEEARR (P261, DR3-restricted peptide; *Mycobacterium tuberculosis* 65 kDa heat shock protein 3–13) in the presence of increasing concentration of peptide blockers (■) P198, (●) peptide 4, (□) peptide 5, (△) peptide 6, (▽) peptide 7. P198: KPLLIIAEDVEGEY; *Mycobacterium bovis* 65 kDa heat shock protein 243–255Y. Mean and range is shown.

pounds.<sup>20</sup> In celiac disease this should be of a less problem as the therapeutic compound can be orally administered to the intestinal surface, either before or in conjunction with gluten ingestion. Peptide based therapeutics are also susceptible to proteolysis; this challenge is particularly acute in celiac disease where the compounds must be administered in the upper digestive tract with intense proteolytic activity. Encouragingly, the T cell epitopes of gluten in celiac disease are intrinsically stable toward proteolysis in the gastrointestinal tract.<sup>26,27</sup> Therefore, using the T cell epitope sequences as a starting point for design of peptide blockers can ameliorate this problem.

Therapeutic interference with MHC based peptide presentation can be done via altered peptide ligands

**Table 1.** Summary of the DQ2 binding results of dimeric peptides **8–15**

Peptides	Carbon atoms in linker	Putative length (Å)	Binding at pH 5.5 <sup>a</sup> (%)	Binding at pH 7.3 <sup>a</sup> (%)
<b>9</b>	13	14.3	72.8	52.1
<b>10</b>	18	19.8	70.9	54.6
<b>8</b>	29	31.9	62.0	46.3
<b>11</b>	29	31.9	63.2	53.3
<b>12</b>	32	35.2	69.3	50.7
<b>13</b>	41	45.1	70.2	54.5
<b>14</b>	53	58.3	70.2	51.8
<b>15</b>	89	97.9	67.8	38.6

<sup>a</sup> Measurements were made either at pH 5.5 or at pH 7.3. Recombinant DQ2 (4.7  $\mu$ M) was mixed with fluorescein-conjugated peptide (0.185  $\mu$ M) at 37 °C for 5 h, and the amount of DQ2 bound peptide was calculated as the percentage ( $\times 100\%$ ) of total peptide. The results are presented as mean of the two experiments with errors  $<5\%$  of the numerical values.

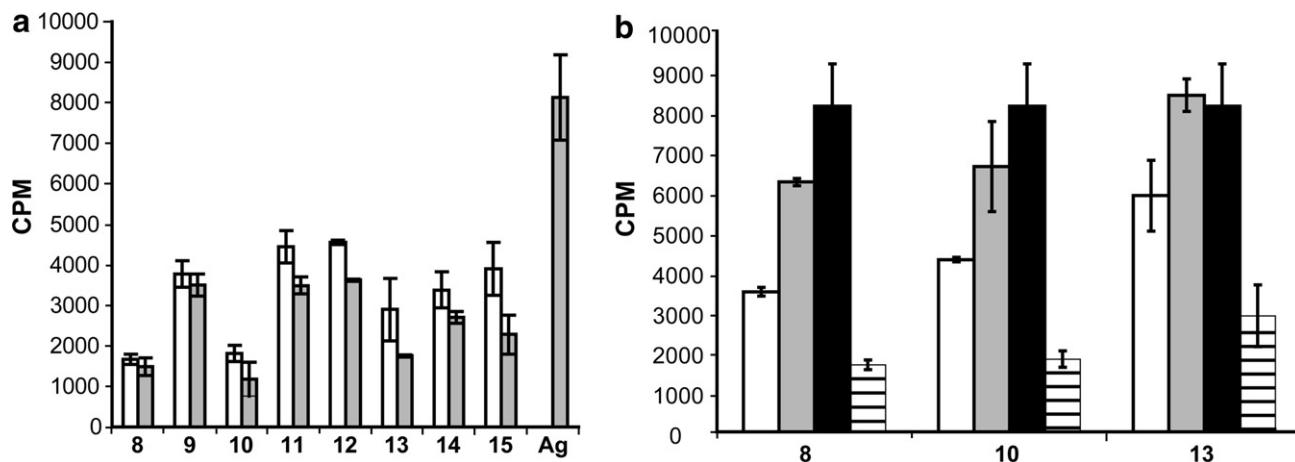
**Table 2.** The 2:1 complex formation of two DQ2 molecules binding to one peptide

Peptides	2:1 Complex formation at pH 5.5 <sup>a</sup> (%)
<b>9</b>	$<10$
<b>10</b>	18
<b>8</b>	22
<b>11</b>	21
<b>12</b>	22
<b>13</b>	26
<b>14</b>	25
<b>15</b>	26

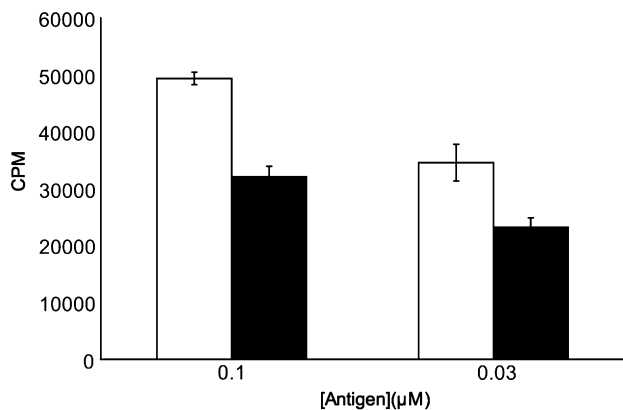
<sup>a</sup> Recombinant DQ2 (4.7  $\mu$ M) was mixed with fluorescein-conjugated peptide (0.185  $\mu$ M) at 37 °C for 45 h at pH 5.5. The formation of 2:1 DQ2-peptide complex with two DQ2 molecules binding to one peptide was reported as the percentage among total DQ2-peptide complex, that is,  $[2:1 \text{ complex}] / ([2:1 \text{ complex}] + [1:1 \text{ complex}]) \times 100\%$ .

(antagonistic peptides) or peptide blockers. Peptide antagonists are inappropriate for effective treatment of celiac disease due to the vast heterogeneity of gluten epitopes and gluten reactive TCRs. However, one can take advantage of gluten epitopes by transforming them into MHC blocking compounds. In addition to proteolytic stability, there are several additional advantages to designing DQ2 blockers by mimicking naturally occurring gluten antigens. The structural features in prototypical antigenic gluten peptides that contribute to DQ2 binding as well as T cell receptor recognition have been extensively investigated, and are known to be orthogonal.<sup>13</sup> This orthogonality enables the design of blockers that hinder TCR recognition while maintaining or even strengthening DQ2 interactions. Blockers that are close structural analogues of disease-related antigenic peptides are likely to retain the pharmacokinetic properties of the antigens themselves. Because gluten antigens are consumed as part of the human diet, drugs modeled after natural gluten peptides may also be able to reach the target tissues of the small intestine via oral administration. Gluten peptide mimetics could preserve the natural DQ2 specificity of the antigens themselves,<sup>13</sup> thus minimizing potential cross-reactivity with other MHC alleles. Cyclization represents an attractive strategy for the design of MHC class II inhibitors. Cyclic peptides





**Figure 7.** DQ2 dependent T cell stimulation of T cell line P28 TCL2 by dimeric peptides 8–15. (a) T cell stimulation caused by dimeric peptides 8–15 in the absence of antigen or by antigen peptide LQLQFPQPELPYPQPELPY (Ag) at 50 μM or 10 μM. The background in the absence of blockers is 170 CPM. □ 50 μM dimeric peptide; ■ 10 μM dimeric peptide or antigen. (b) Blocking compounds 8, 10, and 13 block T cell proliferation caused by 10 μM antigen peptide LQLQFPQPELPYPQPELPY in a dose dependent fashion. □ 50 μM dimeric peptide, 10 μM antigen; ■ 10 μM dimeric peptide, 10 μM antigen; ▨ 0 μM dimeric peptide, 10 μM antigen; ▩ 50 μM dimeric peptide, 0 μM antigen.



**Figure 8.** Dimeric peptide 8 shows blocking efficacy in non-fixed,  $\gamma$ -irradiated antigen presenting cells. HLA-DQ2 expressing B cells were  $\gamma$ -irradiated and incubated with 25 μM dimeric peptide 8 for 2 h before the addition of antigen peptide LQLQFPQPELPYPQPELPY. After an additional 10 h, the peptides were removed and P28 TCL2 T cells were added to assess the quantity of antigen peptide-DQ2 complexes on the B cell surface. □ Antigen only; ■ Antigen + peptide 8.

are proteolytically more stable compared to their linear counterparts.<sup>16</sup> When it comes to receptor binding, peptide cyclization brings two conflicting structural features into play. On one hand, the conformational constraints imposed by cyclization might hinder binding of the epitope to the receptor/the MHC class II molecule. On the other hand, the entropic constraint due to cyclization could lock the peptide into its bound conformation, thereby enhancing affinity for its receptor. A favorable conformation is typically a polypyrrolone II helix for epitopes bound to MHC class II molecules.<sup>19,28</sup> To test whether cyclization affects peptide-DQ2 interaction, cyclic peptides containing the DQ2- $\alpha$ I peptide LQFPQPELPY were synthesized through disulfide linkage with various lengths of linkers. Disulfide bonding is a convenient way for constructing cyclic peptides to test the effect of cyclization on DQ2 binding, but as

the disulfide cyclized peptides appeared to be unstable in the cell culture conditions employed, these peptides could not be used for testing the effect on prevention of T cell activation. For this purpose, we generated more stable cyclic peptides by connecting two internal lysine residues via bis-functional polyethylene glycol (PEG) linkers. These compounds were active as MHC blockers, and two of them based on a 20-mer gliadin peptide are among the best DQ2 blockers we have observed. Still we believe the efficacies of these are insufficient to give in vivo effect much because their binding affinities are too low. Gliadin T cell peptide epitopes are in general mediocre binders to DQ2,<sup>29</sup> and we hope that by specifically introducing anchor residues optimal for DQ2, compounds of therapeutic potential may be developed.

Inspired by the success of synthetic multivalent ligands in generation of high affinity binding interaction in other biological systems,<sup>30–34</sup> we initiated the strategy of dimerizing antigenic ligand through the residue in the middle of the sequence.<sup>13</sup> The first dimer peptide demonstrated surprisingly elevated binding affinity to DQ2 and surpassingly effective inhibition of antigen presentation.<sup>13</sup> This enhancement of binding affinity could be either caused by multivalency effect (i.e., one peptide binding to two DQ2 molecules) or by proximity effect (i.e., the clustering of multiple binding epitopes increases the local concentration of binding registers). In the case of proximity effect a 1:1 stoichiometry of ligand–receptor interaction will be observed as opposed to the multivalency effect where a 2:1 stoichiometry will be seen. The current work explored dimeric peptides by varying the linker length between the two monomeric units. We observed two binding phases in the binding interaction between these dimeric peptides and DQ2 at pH 5.5 using high-performance size exclusion chromatography. In the first phase (5 h), 1:1 binding stoichiometry to DQ2 was observed with negligible 2:1 complex formation, even when the linker between the two monomeric units was as long as 100 Å. The binding equilibrium was reached

after the first phase. In the second phase which lasts for more than 40 h, 1:1 DQ2-peptide complex slowly converts to 2:1 DQ2-peptide complex with ~20% conversion achieved after 48 h (Table 2). The dimer peptides with longer linker length tend to show higher percentage of 2:1 DQ2-peptide complex formation in the second phase, that is, about 10% in the case of peptide **9** and about 26% in the case of peptide **15**. Interestingly, this two-phase binding kinetics was not observed at pH 7.3; no 2:1 DQ2-peptide complexes were observed after 48 h. The observation that this enhanced affinity is primarily caused by the fast phase at acidic pH and that no 2:1 complexes were found at neutral pH disfavors the multivalency mechanism. Rather, proximity effect caused by the clustering of multiple epitopes might explain this property.<sup>34</sup> When two binding monomeric units are brought in vicinity an enhanced binding affinity can be achieved. Owing to the promising enhanced binding affinity, synthesis of dimeric, multimeric or even dendritic peptides carrying multiple binding epitopes seems to be an effective venue in the search of DQ2 blockers.

In summary, herein we presented alternative approaches to systematically study hindered peptide analogues for the purpose of DQ2 blockage. The current strategies provide understanding of cyclic and dimeric peptide analogues in both DQ2 binding interaction and inhibition of antigen presentation, which might assist further pharmacological studies in more disease related physiological conditions, and inspire the development of more feasible drug leads in celiac disease as well as other autoimmune diseases.

## 4. Experimental

### 4.1. Peptide synthesis, labeling, and purification

Peptides used in this study were synthesized primarily using Boc/HBTU chemistry starting from *N*- $\alpha$ -*t*-Boc-L-aminoacyl-phenylacetamidomethyl (PAM) resin. While still attached to the resin, peptides were labeled at their N-termini with 5- (and 6-) carboxyfluorescein, 1-(3-dimethylaminopropyl)-3-ethyl-carbodiimide hydrochloride (EDC·HCl), and 1-hydroxy-7-azabenzotriazole (HOAt) in 1:1:1 ratio in dimethyl formamide (DMF) as the solvent.<sup>13,35</sup> Following cleavage of the peptidyl resin in trifluoroacetic acid/trifluoromethanesulfonic acid/thioanisole (TFA/TFMSA/thioanisole 10:1:1, v/v/v) for 4 h, the crude peptides were precipitated in cold ether and dissolved in 1:1 v/v acetonitrile/water. The peptides were purified by reverse-phase HPLC on a semi-preparative C<sub>18</sub> column using a water–acetonitrile gradient in 0.1% (v/v) TFA. The identity and purity of the peptides were confirmed by liquid chromatography coupled electrospray mass spectrometry (LC–MS). The peptides were lyophilized and stored at –20 °C. Prior to use, peptide stock solutions were prepared in 10 mM PBS with 0.02% sodium azide.

Peptides **4** and **5** (Fig. 1) were synthesized using an automated synthesizer (Multi pep, Intavis AG) with Fmoc/

PyBOP chemistry starting from TentaGEL SRAM resin. Before cleavage of peptides from the resin, the N-termini were acetylated and the peptides were cyclized. The protecting group on Lys residues, 1-(4,4-dimethyl-2,6-dioxycyclohex-1-ylidene)ethyl (Dde), was selectively removed with 1% hydrazine in DMF. Peptide **4** was cyclized with bis-dPEG<sub>7</sub>-acid (HO<sub>2</sub>CCH<sub>2</sub>CH<sub>2</sub>(CH<sub>2</sub>CH<sub>2</sub>O)<sub>7</sub>CO<sub>2</sub>H) (Quanta BioDesign), while peptide **5** was cyclized with Poly(ethyleneglycol)bis(carboxymethyl)ether (HO<sub>2</sub>CCH<sub>2</sub>(OCH<sub>2</sub>CH<sub>2</sub>)<sub>*n*</sub>OCH<sub>2</sub>CO<sub>2</sub>H) average M<sub>n</sub> ~600 (Aldrich). Cyclization was achieved by mixing peptidyl resin in DMF with either of the dicarboxylic acids (2 equiv), PyBOP (4 equiv), and diisopropylethylamine (DIPEA) (8 equiv). This mix was incubated overnight, after which a negative ninhydrin test was obtained. Peptides were deprotected and cleaved from the polymer support by treatment with 95% TFA, 2.5% triisopropylsilane, and 2.5% water for 4 h. Peptides were precipitated by the addition of cold *tert*-butyl methyl ether, dissolved in water, and lyophilized. The peptides were analyzed by reverse phase HPLC and MALDI-TOF mass spectrometry. The peptides were aliquoted and lyophilized before storage at –20 °C. It should be noted that peptide **5** represents a mixture of peptides with different lengths of the linker, due to the polydispersity of the PEG linker used for synthesis.

Cyclic peptides with disulfide bridges (**1**, **2**, and **3** in Fig. 1) were prepared in pH 7 phosphate buffer at 50 °C with periodic vortexing. Internally bridged cyclic peptides **4** and **5** in Figure 1 were cyclized as described above. Cyclic peptides **6** and **7** were prepared by incubating purified carboxyfluorescein labeled LQLQPFPPQPEKPYPQPEKPY peptide with bis-dPEG *N*-hydroxysuccinimide ester at a 1:1 ratio in anhydrous DMF containing 5% v/v DIPEA. The cyclized product was confirmed by LC–MS. The concentrations of carboxyfluorescein labeled peptides were determined by UV–Vis spectrophotometry at 495 nm using the absorption coefficient factor 80,200 cm<sup>–1</sup>M<sup>–1</sup>.

Dimeric peptides were synthesized from pure monomeric carboxyfluorescein labeled peptides **L11C** or **L11K** (Fig. 2b). Monomeric subunits (**L11C**–**L11C**, **L11C**–**L11K**, or **L11K**–**L11K** depending on the functional groups of the linkers) were mixed with bis-functional linkers purchased from Quanta Biodesign or Pierce Biotechnology, (e.g., hydroxysuccinimide maleimide propionate (SMP), bis(sulfosuccinimide)suberate (BS<sup>3</sup>), bis-dPEG5-NHS, bis-dPEG9-NHS, MAL-dPEG4-NHS, MAL-dPEG12-NHS, MAL-dPEG24-NHS, and bis-MAL-dPEG3, where NHS denotes *N*-hydroxysuccinimide ester, and MAL denotes maleimide), at 1:1:0.9 ratio (monomer1:monomer2:cross-linker) in anhydrous DMF with 5% v/v DIPEA. For monitoring the formation of dimeric peptides as well as purification of the desired product, C<sub>18</sub> reverse phase HPLC was used. The dimeric product peaks eluted approximately 2 min after the monomeric starting material, as confirmed by LC–MS. The concentration of each fluorescent dimeric peptide was quantified by using the absorption coefficient factor 160,400 cm<sup>–1</sup>M<sup>–1</sup> at 495 nm.

## 4.2. Peptide exchange assay

Peptide exchange assays were conducted as previously described.<sup>13</sup> In brief, soluble recombinant DQ2 molecules with a gliadin epitope fused to the N-terminus of the  $\beta$ -chain were expressed and purified. Prior to use in exchange experiments, recombinant DQ2 molecules were treated with  $\sim 2\%$  w/w thrombin in PBS pH 7.3 at 0 °C for 2 h to release the covalently linked epitope for peptide exchange measurements. Thrombin treated DQ2 was incubated with fluorescein-conjugated peptides in a 25:1 ratio (i.e., 4.7  $\mu$ M DQ2 with 0.185  $\mu$ M fluorescent peptide) at 37 °C in a 1:1 mixture of PBS buffer (10 mM sodium phosphate, 150 mM NaCl, pH 7.3, supplemented with 0.02%  $\text{NaN}_3$ ) and McIlvaine's citrate-phosphate buffer (pH 5 or pH 7) such that the final pH was either 5.5 or 7.3, respectively. Peptide binding was measured by high performance size exclusion chromatography (HPSEC) coupled with fluorescence detection with excitation at 495 nm and emission at 520 nm. The DQ2-peptide 1:1 complex eluted at  $\sim 8.5$  min, with free peptides emerging  $\sim 2$  min later. When present, the 2:1 DQ2-peptide complex eluted  $\sim 0.5$  min before the 1:1 complex. Peak areas corresponding to the DQ2-peptide complex and the free peptide were used to calculate the fractional yield of the DQ2-fluoresceinated peptide complex. At least two independent measurements were conducted, with an error  $< 5\%$ .

## 4.3. Competitive DQ2-peptide binding assay

Detergent-solubilized DQ2 molecules were purified from HLA homozygous (DQA1 \* 0501/DQB1 \* 0201) Epstein-Barr virus-transformed B lymphoblastoid cell lines as previously described.<sup>36</sup> The indicator peptide (KPLIIAEDVEGEY; *Mycobacterium bovis* 65-kDa heat shock protein 243–255Y) was  $^{125}\text{I}$ -labeled by the chloramine-T method.<sup>37</sup> The labeled indicator peptide (30,000 cpm; 1–5 nM) and various concentrations of unlabeled peptides were incubated overnight with 70–200 nM DQ2 at 37 °C in the presence of a cocktail of protease inhibitors at pH 5.2. After incubation, complexes of peptide and DQ2 molecules were separated from unbound peptides on Sephadex G-50 (Amersham Biosciences AB) spin columns as described previously.<sup>38</sup> Radioactivity was measured, and the concentrations of competing peptides required to give 50% inhibition of binding of the indicator peptide ( $\text{IC}_{50}$ ) were calculated. The  $\text{IC}_{50}$  values were determined by three 3-fold titration experiments.

## 4.4. T cell reagents

Gluten reactive T cell lines (TCL) and T cell clones (TCC) established from small intestinal biopsies of celiac disease patients were used.<sup>29,39</sup> This includes the T cell line P28 TCL2 (which is reactive to DQ2- $\alpha$ I, DQ2- $\alpha$ II, and DQ2- $\alpha$ III epitopes of the deamidated 33-mer peptide) and the T cell clones TCC 437.1.3.17 (specific for the DQ2- $\gamma$ II epitope) and TCC 430.1.142 (specific for the DQ2- $\alpha$ I epitope). In addition a DR3-restricted T cell clone, TCC RN.46 (specific for the 3–13

epitope of *Mycobacterium tuberculosis* heat shock protein 65, KTIA YDEEARR), was used.

## 4.5. T cell proliferation assays

T cell proliferation assays were performed mainly as described previously.<sup>13</sup> HLA-DR3/DQ2 homozygous Epstein-Barr virus transformed B-lymphoblastoid cell lines (VAVY or CD114) were used as antigen presenting cells. The cells were fixed with 1% paraformaldehyde for 10 min or with 0.05% glutaraldehyde for 90 s using 0.2 M glycine to quench the reaction. The antigen presenting cells were incubated with the appropriate peptides overnight in 60 or 65  $\mu$ l media containing 10% fetal bovine serum/2% human serum or 15% human serum, penicillin, and streptomycin at a cell density of  $2 \times 10^6$  cells/ml in 96-well flat bottom plates. The next day, the volume was doubled to yield a cell density of  $1 \times 10^6$  cells/ml, and the cells were seeded in duplicates of 50  $\mu$ l each in a U-bottom 96-well plate. An equal volume of T cells (50  $\mu$ l of  $1 \times 10^6$  cells/ml) was added to each well, and cells were incubated at 37 °C and 5%  $\text{CO}_2$  for 48 h, at which time 0.5  $\mu\text{Ci}$ /well of [methyl- $^3\text{H}$ ]thymidine (Amersham, TRK120) or 1  $\mu\text{Ci}$ /well of [methyl- $^3\text{H}$ ]thymidine (Hartmann Analytic) was added. Cells were incubated for an additional 12–16 h and then frozen or harvested directly. After thawing, incorporated thymidine was collected on a filter mat (Wallac) using a Tomtec cell harvester and counted using a Wallac 1205 Betaplate or Wallac 1450 MicroBeta TriLux liquid scintillation counter. For testing of whether the cyclic peptides which harbored the DQ2- $\alpha$ I sequence were recognized by a DQ2- $\alpha$ I-specific T cell clone, the same assay was performed except that triplicate wells containing  $7.5 \times 10^4$  antigen presenting cells were prepulsed overnight with peptide in a volume of 100  $\mu$ l before  $5 \times 10^4$  T cells per well in 50  $\mu$ l were added the following day.

For T cell assays using  $\gamma$ -irradiated B-lymphoblastoid cells, VAVY cells were  $\gamma$ -irradiated (12,000 rads) with a cesium irradiator, resuspended to  $2 \times 10^6$  cells/ml, and incubated with or without 25  $\mu$ M peptide **8** for 2 h in a flat bottom 96-well plate. Antigen peptide LQLQFPQPELPYPQPELPY was then added at 0.1 or 0.03  $\mu$ M and incubated for an additional 10 h. The volume was doubled and each well was transferred into an Eppendorf tube. The cells were centrifuged at 800g for 3 min at 4 °C. Next, the supernatant was aspirated, the cells were resuspended to  $1 \times 10^6$  cells/ml, and the T cell proliferation protocol described above was used to measure  $^3\text{H}$ -thymidine incorporation into P28 TCL2 T cells.

## Acknowledgments

This work was supported by a grant from the NIH (R21 DK65965 to C.K.) and by grants from the Research Council of Norway, the Rikshospitalet–Radiumhospitalet Medical Center, and the Fulbright Fellowship Program to L.M.S. M. Siegel is a recipient of a predoctoral fellowship from the Stanford-NIH Biotech-



nology Training Grant, and E. Bergseng is recipient of a fellowship from the Norwegian Foundation for Health and Rehabilitation (EXTRA fund).

### References and notes

1. Tiwari, J.; Terasaki, P. In *HLA and disease association*; Springer-Verlag: New York, 1985.
2. Nepom, B. S. *Clin. Immunol. Immunopathol.* **1993**, *67*, S50–S55.
3. Todd, J. A.; Acha-Orbea, H.; Bell, J. I.; Chao, N.; Fronek, Z.; Jacob, C. O.; McDermott, M.; Sinha, A. A.; Timmerman, L.; Steinman, L.; McDevitt, H. O. *Science* **1988**, *240*, 1003–1009.
4. Jones, E. Y.; Fugger, L.; Strominger, J. L.; Siebold, C. *Nat. Rev. Immunol.* **2006**, *6*, 271–282.
5. Sollid, L. M.; Thorsby, E. *Gastroenterology* **1993**, *105*, 910–922.
6. Sollid, L. M. *Nat. Rev. Immunol.* **2002**, *2*, 647–655.
7. Sloan-Lancaster, J.; Allen, P. M. *Annu. Rev. Immunol.* **1996**, *14*, 1–27.
8. de Haan, E. C.; Moret, E. E.; Wagenaar-Hilbers, J. P. A.; Liskamp, R. M. J.; Wauben, M. H. M. *Mol. Immunol.* **2005**, *42*, 365–373.
9. Adorini, L.; Muller, S.; Cardinaux, F.; Lehmann, P. V.; Falcioni, F.; Nagy, Z. A. *Nature* **1988**, *334*, 623–625.
10. Sakai, K.; Zamvil, S. S.; Mitchell, D. J.; Hodgkinson, S.; Rothbard, J. B.; Steinman, L. *Proc. Natl. Acad. Sci. U.S.A.* **1989**, *86*, 9470–9474.
11. Hurtenbach, U.; Lier, E.; Adorini, L.; Nagy, Z. A. *J. Exp. Med.* **1993**, *177*, 1499–1504.
12. De Magistris, M. T.; Alexander, J.; Coggeshall, M.; Altman, A.; Gaeta, F. C. A.; Grey, H. M.; Sette, A. *Cell* **1992**, *68*, 625–634.
13. Xia, J.; Siegel, M.; Bergseng, E.; Sollid, L. M.; Khosla, C. *J. Am. Chem. Soc.* **2006**, *128*, 1859–1867.
14. Tselios, T.; Daliani, I.; Deraos, S.; Thymianou, S.; Matsoukas, E.; Troganis, A.; Gerothanassis, I.; Mouzaki, A.; Mavromoustakos, T.; Probert, L.; Matsoukas, J. *Bioorg. Med. Chem. Lett.* **2000**, *10*, 2713–2717.
15. Tselios, T.; Apostolopoulos, V.; Daliani, I.; Deraos, S.; Grdadolnik, S.; Mavromoustakos, T.; Melachrinou, M.; Thymianou, S.; Probert, L.; Mouzaki, A.; Matsoukas, J. *J. Med. Chem.* **2002**, *45*, 275–283.
16. Matsoukas, J.; Apostolopoulos, V.; Kalbacher, H.; Papini, A. M.; Tselios, T.; Chatzantoni, K.; Biagioli, T.; Lolli, F.; Deraos, S.; Papathanassopoulos, P.; Troganis, A.; Mantzourani, E.; Mavromoustakos, T.; Mouzaki, A. *J. Med. Chem.* **2005**, *48*, 1470–1480.
17. Bouvier, M.; Wiley, D. C. *Proc. Natl. Acad. Sci. U.S.A.* **1996**, *93*, 4583–4588.
18. Berezhkovskiy, L.; Pham, S.; Reich, E. P.; Deshpande, S. *J. Pept. Res.* **1999**, *54*, 112–119.
19. Kim, C. Y.; Quarsten, H.; Bergseng, E.; Khosla, C.; Sollid, L. M. *Proc. Natl. Acad. Sci. U.S.A.* **2004**, *101*, 4175–4179.
20. Ishioka, G. Y.; Adorini, L.; Guery, J. C.; Gaeta, F. C. A.; Lafond, R.; Alexander, J.; Powell, M. F.; Sette, A.; Grey, H. M. *J. Immunol.* **1994**, *152*, 4310–4319.
21. Lamont, A. G.; Powell, M. F.; Colon, S. M.; Miles, C.; Grey, H. M.; Sette, A. *J. Immunol.* **1990**, *144*, 2493–2498.
22. Jones, A. B.; Acton, J. J.; Rivetna, M. N.; Cummings, R. T.; Cubbon, R. M.; Nichols, E. A.; Schwartz, C. D.; Wicker, L. S.; Hermes, J. D. *Bioorg. Med. Chem. Lett.* **1999**, *9*, 2109–2114.
23. Jones, A. B.; Acton, J. J.; Adams, A. D.; Yuen, W.; Nichols, E. A.; Schwartz, C. D.; Wicker, L. S.; Hermes, J. D. *Bioorg. Med. Chem. Lett.* **1999**, *9*, 2115–2118.
24. Falcioni, F.; Ito, K.; Vidovic, D.; Belunis, C.; Campbell, R.; Berthel, S. J.; Bolin, D. R.; Gillespie, P. B.; Huby, N.; Olson, G. L.; Sarabu, R.; Guenot, J.; Madison, V.; Hammer, J.; Sinigaglia, F.; Steinmetz, M.; Nagy, Z. A. *Nat. Biotechnol.* **1999**, *17*, 562–567.
25. Bolin, D. R.; Swain, A. L.; Sarabu, R.; Berthel, S. J.; Gillespie, P.; Huby, N. J. S.; Makofske, R.; Orzechowski, L.; Perrotta, A.; Toth, K.; Cooper, J. P.; Jiang, N.; Falcioni, F.; Campbell, R.; Cox, D.; Gaizband, D.; Belunis, C. J.; Vidovic, D.; Ito, K.; Crowther, R.; Kammlott, U.; Zhang, X. L.; Palermo, R.; Weber, D.; Guenot, J.; Nagy, Z.; Olson, G. L. *J. Med. Chem.* **2000**, *43*, 2135–2148.
26. Shan, L.; Molberg, Ø.; Parrot, I.; Hausch, F.; Filiz, F.; Gray, G. M.; Sollid, L. M.; Khosla, C. *Science* **2002**, *297*, 2275–2279.
27. Shan, L.; Qiao, S. W.; Arentz-Hansen, H.; Molberg, Ø.; Gray, G. M.; Sollid, L. M.; Khosla, C. *J. Proteome. Res.* **2005**, *4*, 1732–1741.
28. Jardetzky, T. S.; Brown, J. H.; Gorga, J. C.; Stern, L. J.; Urban, R. G.; Strominger, J. L.; Wiley, D. C. *Proc. Natl. Acad. Sci. U.S.A.* **1996**, *93*, 734–738.
29. Qiao, S. W.; Bergseng, E.; Molberg, Ø.; Jung, G.; Fleckenstein, B.; Sollid, L. M. *J. Immunol.* **2005**, *175*, 254–261.
30. Kiessling, L. L.; Gestwicki, J. E.; Strong, L. E. *Curr. Opin. Chem. Biol.* **2000**, *4*, 696–703.
31. Kitov, P. I.; Sadowska, J. M.; Mulvey, G.; Armstrong, G. D.; Ling, H.; Pannu, N. S.; Read, R. J.; Bundle, D. R. *Nature* **2000**, *403*, 669–672.
32. Mammen, M.; Choi, S. K.; Whitesides, G. M. *Angew. Chem. Int. Edit.* **1998**, *37*, 2755–2794.
33. Suchek, S. J.; Wong, A. L.; Koeller, K. M.; Boehr, D. D.; Draker, K.; Sears, P.; Wright, G. D.; Wong, C. H. *J. Am. Chem. Soc.* **2000**, *122*, 5230–5231.
34. Mangold, S. L.; Cloninger, M. J. *Org. Biomol. Chem.* **2006**, *4*, 2458–2465.
35. Xia, J.; Sollid, L. M.; Khosla, C. *Biochemistry* **2005**, *44*, 4442–4449.
36. Johansen, B. H.; Buus, S.; Vartdal, F.; Viken, H.; Eriksen, J. A.; Thorsby, E.; Sollid, L. M. *Int. Immunol.* **1994**, *6*, 453–461.
37. Greenwood, F. C.; Hunter, W. M. *Biochem. J.* **1963**, *89*, 114.
38. Buus, S.; Stryhn, A.; Winther, K.; Kirkby, N.; Pedersen, L. O. *Biochim. Biophys. Acta* **1995**, *1243*, 453–460.
39. Siegel, M.; Bethune, M. T.; Gass, J.; Ehren, J.; Xia, J.; Johannsen, A.; Stuge, T. B.; Gray, G. M.; Lee, P. P.; Khosla, C. *Chem. Biol.* **2006**, *13*, 649–658.